



**Best Value**  
in the Industry

**SAVINGS**  
Without Sacrifice!

**NEW  
ITEM**

# Mechanical Stud Punch

*The Mechanical Stud Punch is a tool for punching steel wall studs. Efficient design provides high power and easy operation. An ideal tool to be used in construction and electrical applications.*

**902-570**

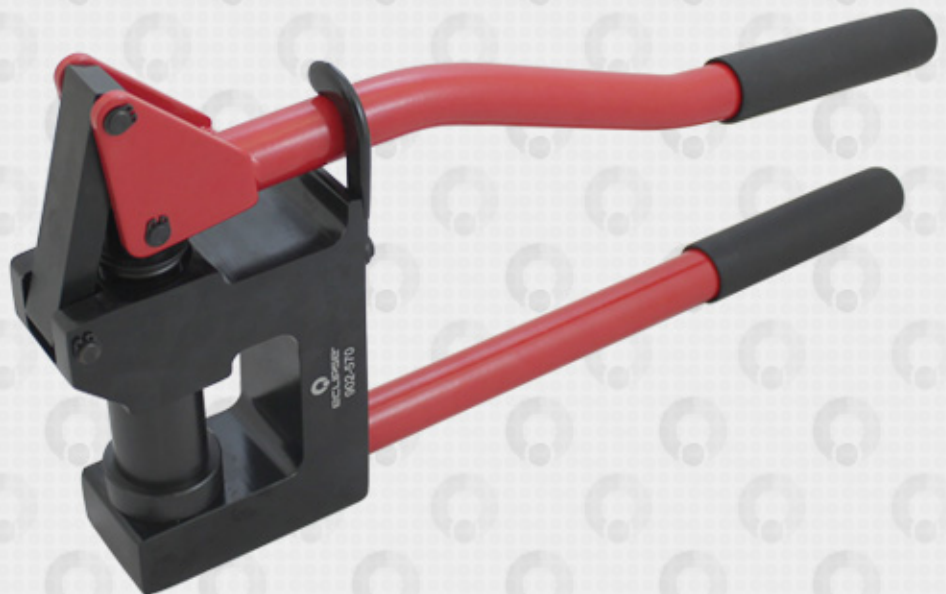
**Max Punching Range:**

Ø 1.34 in., 0.04 in. mild steel

**Stroke:** 1.75 in.

**Dimensions:** 18.5 x 8.5 x 2 in.

**Weight:** Approx. 8 lbs



**Includes Round knockout Punches 0.88 and 1.34 in. & Plastic Storage Box**

**Order Today! 804.561.2610**

Email: [SalesSupport@EclipseTools.com](mailto:SalesSupport@EclipseTools.com)

Eclipse Enterprises, Inc. • Tel: 804.561.2610 • Fax: 804.561.2642  
13302 Chula Road, Amelia Court House, VA 23002 • [EclipseTools.com](http://EclipseTools.com)

